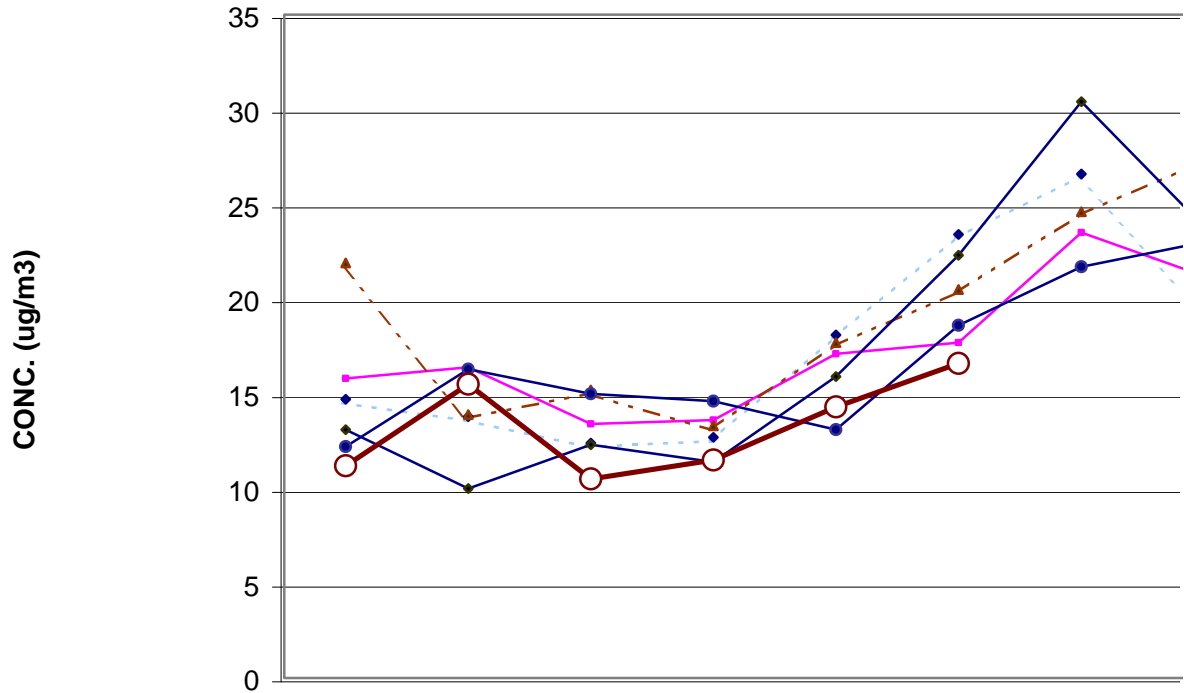


LOUISVILLE METRO FRM PM2.5 MONTHLY AVERAG

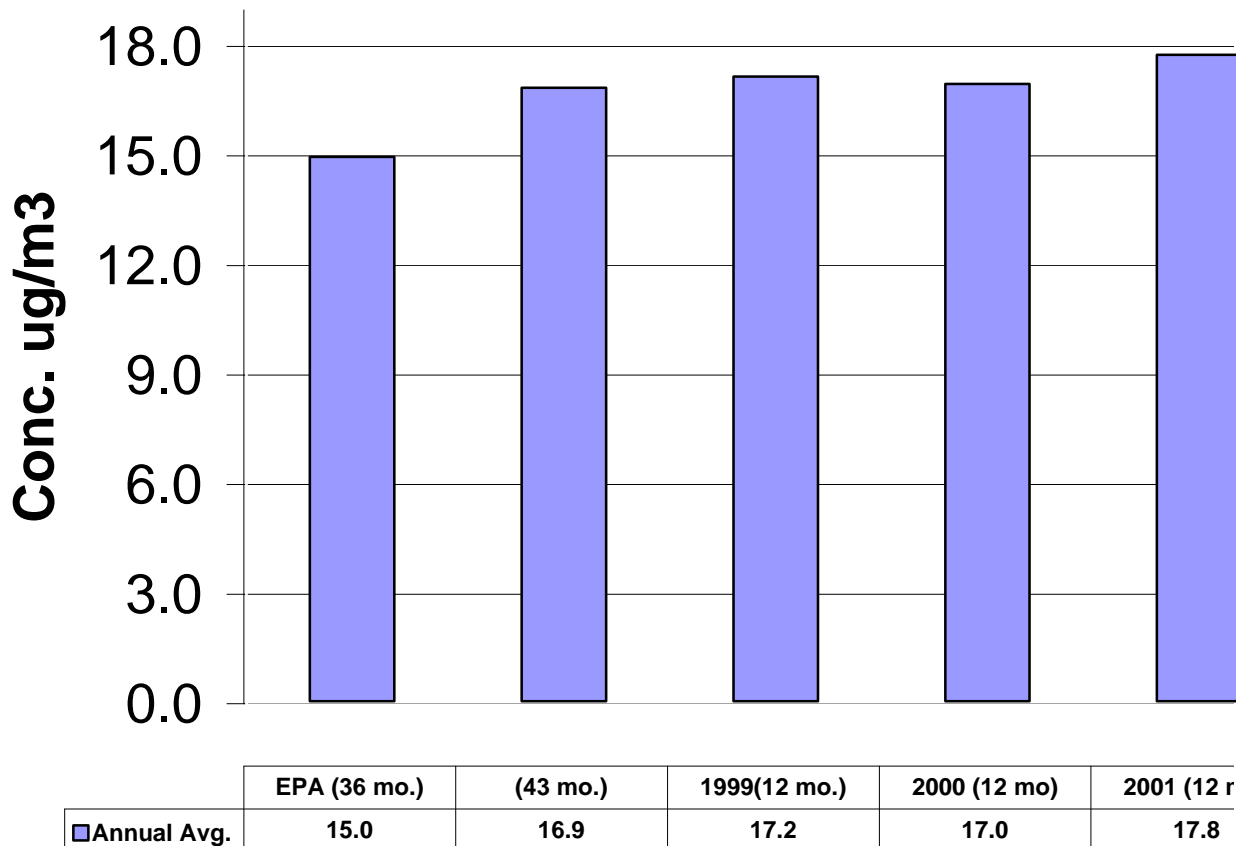


| | Jan | Feb | Mar | Apr | May | Jun | Jul |
|----------|------|------|------|------|------|------|------|
| 99 M-Avg | 14.7 | 13.8 | 12.4 | 12.7 | 18.1 | 23.4 | 26.6 |
| 00 M-Avg | 15.8 | 16.4 | 13.4 | 13.6 | 17.1 | 17.7 | 23.5 |
| 01 M-Avg | 21.9 | 13.9 | 15.2 | 13.3 | 17.7 | 20.5 | 24.6 |
| 02 M-Avg | 13.1 | 10 | 12.3 | 11.4 | 15.9 | 22.3 | 30.4 |
| 03 M-Avg | 12.2 | 16.3 | 15 | 14.6 | 13.1 | 18.6 | 21.7 |
| 04 M-Avg | 11.2 | 15.5 | 10.5 | 11.5 | 14.3 | 16.6 | |

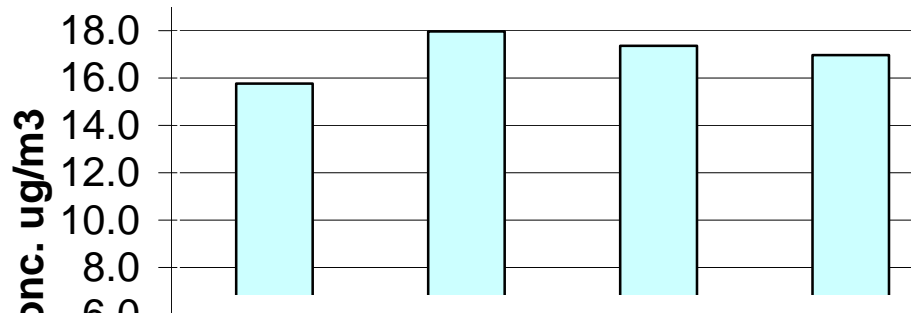
MONTH

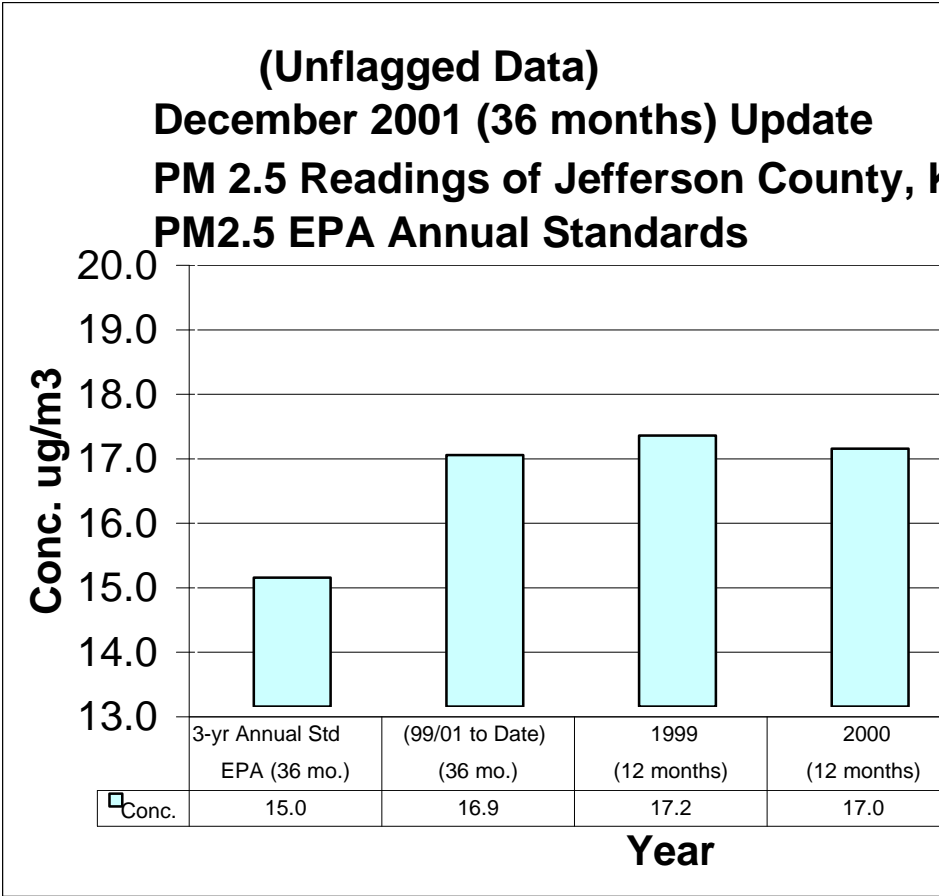
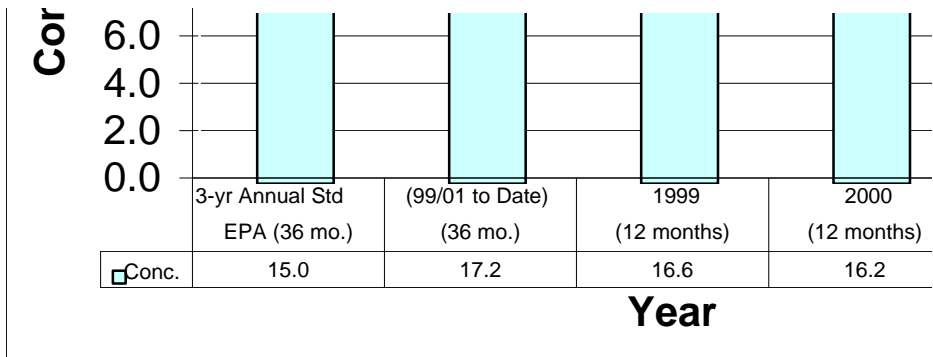
**May 2002 (41 months) Update
PM 2.5 Readings of Jefferson County, KY
PM2.5 EPA Annual Standards**

PM2.5 EPA Annual Standards

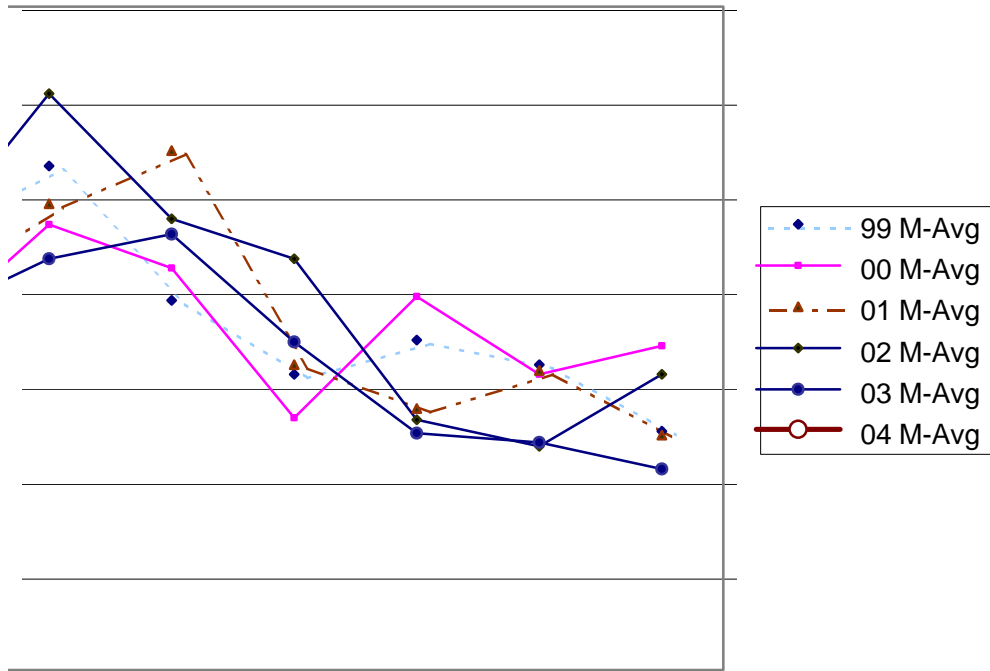


January 2002 (37 months) Update PM 2.5 Readings of Jefferson County, PM2.5 EPA Annual Standards





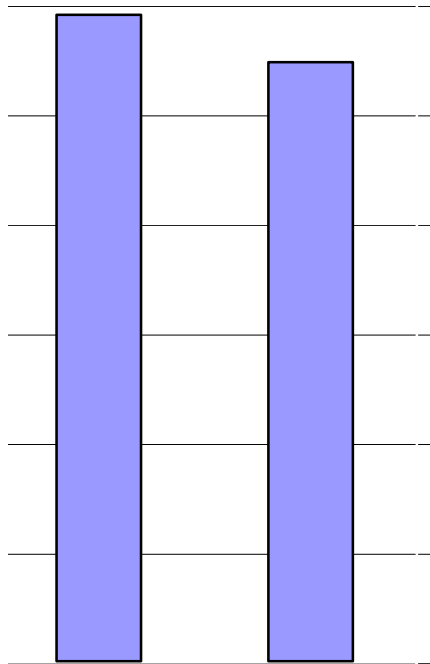
7 AVERAGES TRENDS FOR 1999 - 2004



| Jul | Aug | Sep | Oct | Nov | Dec |
|------|------|------|------|------|------|
| 26.6 | 19.5 | 15.6 | 17.4 | 16.1 | 12.6 |
| 23.5 | 21.2 | 13.3 | 19.7 | 15.6 | 17.1 |
| 24.6 | 27.4 | 16.1 | 13.8 | 15.8 | 12.4 |
| 30.4 | 23.8 | 21.7 | 13.2 | 11.8 | 15.6 |
| 21.7 | 23 | 17.3 | 12.5 | 12.0 | 10.6 |
| | | | | | |

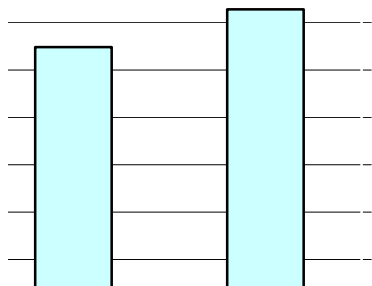
TH

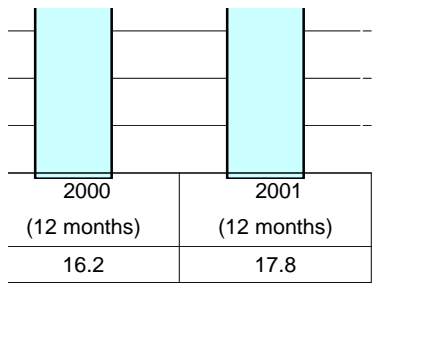
e
nty, KY vs.



| 2001 (12 mo) | 2002 (07mo) |
|--------------|-------------|
| 17.8 | 16.5 |

**Update
ounty, KY vs.**





**date
ounty, KY vs.**

